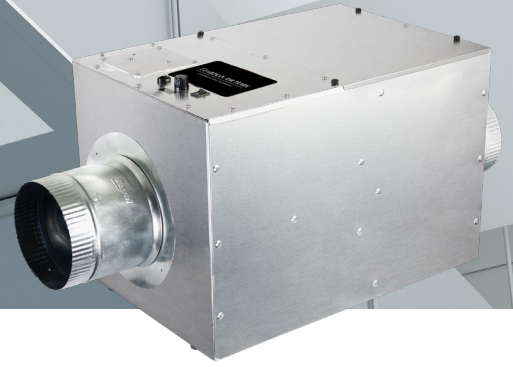




Protecting Indoor Air and Surfaces™



Features ActivePure® Technology proven to reduce viruses, bacteria, and other pathogens (full list of tested pathogens available below in “The Proof”)

THE TECHNOLOGY

The Aerus Guardian Air Home combines multiple complementary technologies, including a pre-filter, HEPA, activated carbon, and ActivePure Technology. Patented ActivePure Technology is an advanced air purification technology. It has been proven to reduce over 99.9% of many common airborne and surface contaminants (list of tested pathogens can be found in “The Proof” section below).

ActivePure does not replace the need to follow public health guidelines and should be used as complementary technology.

THE PROOF

In extensive unaffiliated lab testing, ActivePure® Technology has been proven to significantly reduce the following contaminants and pathogens:

- SARS-CoV-2 – RNA Virus
- H1N1 Influenza
- H5N8 Influenza
- Murine Norovirus
- PhiX-174
- MS2 Bacteriophage
- MRSA
- E. coli
- Salmonella enterica
- Legionella pneumophila
- Clostridium difficile
- Bacillus globigii
- Erwinia herbicola
- Listeria monocytogenes
- Candida auris
- Botrytis cinerea
- Sclerotinia sclerotiorum
- Aspergillus versicolor
- Aspergillus niger endospores
- Methicillin-resistant Staphylococcus epidermis
- Staphylococcus epidermidis

THE BENEFITS

The Aerus Guardian Air Home provides surface decontamination and air purification without the use of ozone. It is an automated, proactive and effective solution for your home or business.

- A 4-stage filtration process is used to create a very effective filtration system.
- Quickly works to disinfect surfaces and air
- Helps to remove VOCs, smoke and odors in the air
- Protects heating and cooling system from dust buildup





GUARDIAN AIR HOME

SPECIFICATIONS

Product Information	00700 Model F193B Meets California ozone emissions limit. CARB Certified.
Technology Included	ActivePure® HEPA Filter Pre-Filter
Electrical	Supply Voltage: 120 VAC Power Consumption: 1.45 Amps; 96 Watts
Mechanical	Air Flow: 300 CFM Air Intake Collar: 6" round Air Outtake Collar: 6" round
Weight & Dimensions	14.35 lbs 13.5" W x 13.5" H x 19.5" D
Operating Temperature	(Return Air) 30° F to 95° F
Recommended Maximum Coverage in a Contiguous Space ¹	Up to 3,000 sq. ft. depending on occupant density and other factors ¹ . High density commercial not to exceed 1,500 sq. ft.
Warranty	Limited 5 year warranty (Terms & Conditions apply)

Aerus Clean Home Center
487 Federal Road
Brookfield Ct 06804
(203) 775-4571
www.aerusbrookfield.com



Contact Name: _____



Email: _____



Phone Number: _____

1. Assumes 8 foot ceilings. Solutions should be customized based upon a variety of factors including HVAC system capabilities and settings, air flows taking into account walls, air pressure, and doors, ambient air temperatures and humidities, variable density, known VOC concentrations, and other layers of protection